

CHARMILL

RESIDENTIAL



Woodside Avenue, North Finchley N12

£346 Per month



Woodside Avenue



Description

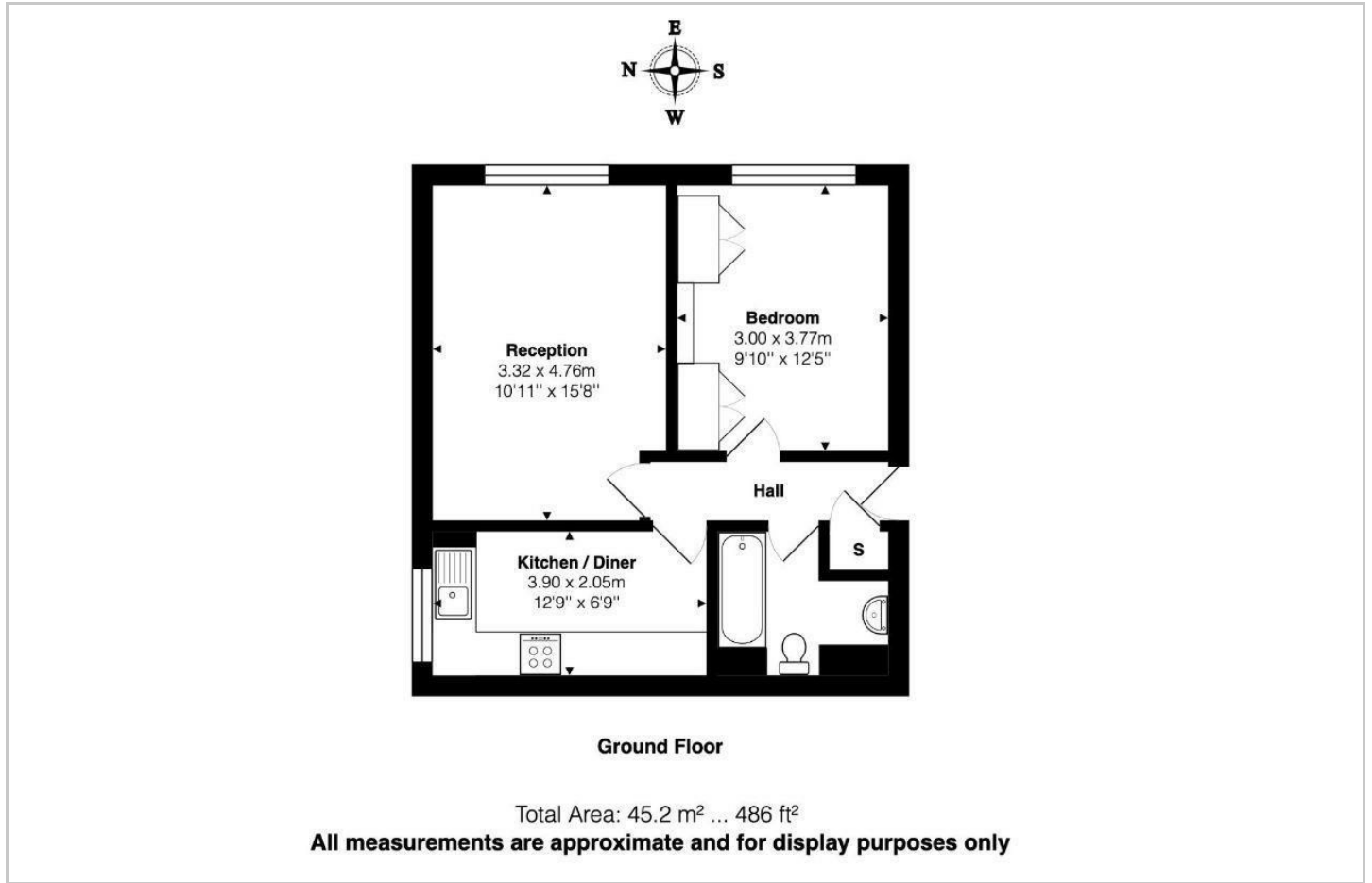
A recently refurbished one bedroom apartment set on the ground floor of this well-maintained purpose built block in North Finchley. This property offers a bright and spacious reception room, a separate full-fitted kitchen, a generously sized double bedroom with fitted wardrobes and a family bathroom. Further benefits include a private garage and excellent transport links, with Woodside Park Underground station (Northern) and West Finchley Station 0.4 miles away and 0.7 miles away respectively.

- Recently refurbished
- Unfurnished
- Ample storage
- Private garage
- Well-located

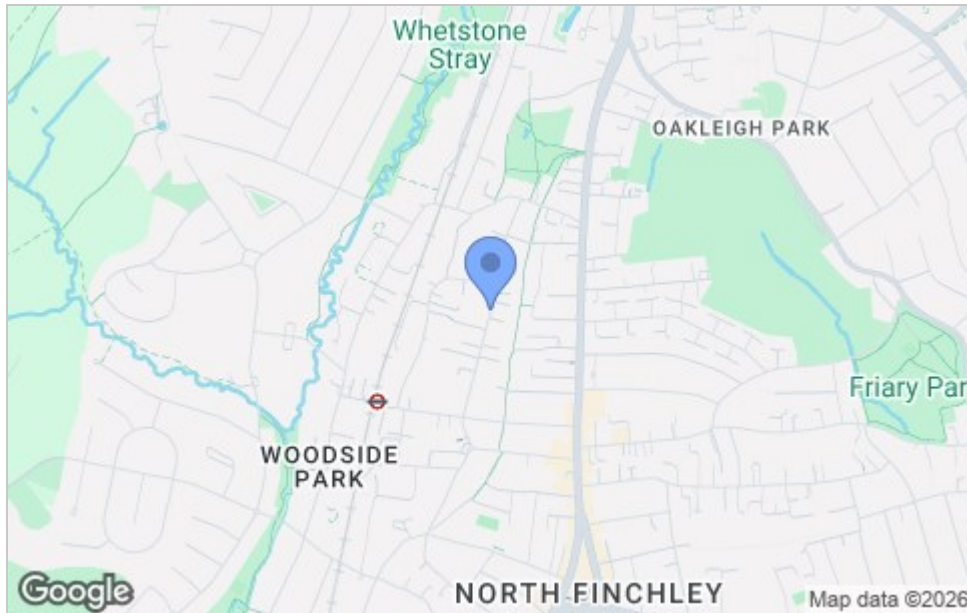




Floor Plan



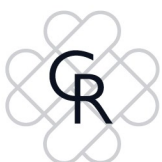
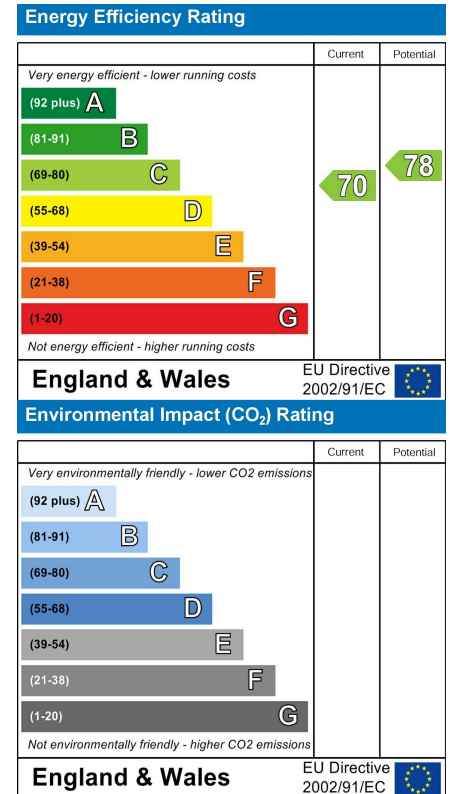
Area Map



Viewing

Please contact us on 020 7046 6275 if you wish to arrange a viewing appointment for this property or require further information.

Energy Efficiency Graph



These particulars, whilst believed to be accurate are set out as a general outline only for guidance and do not constitute any part of an offer or contract. Intending purchasers should not rely on them as statements of representation of fact, but must satisfy themselves by inspection or otherwise as to their accuracy. No person in this firm's employment has the authority to make or give any representation or warranty in respect of the property.

020 7046 6275 • sales@chamillresidential.co.uk • 51 Maida Vale, Little Venice, London W9 1SD
 charmillresidential.co.uk